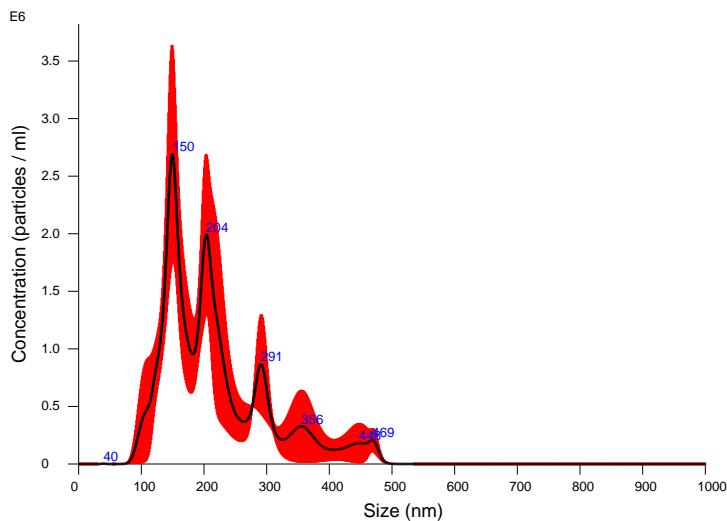


FTLA Concentration / Size graph for Experiment:
Capture 2020-11-11 11-19-46



Averaged FTLA Concentration / Size for Experiment:
Capture 2020-11-11 11-19-46
Error bars indicate + / - 1 standard error of the mean

Included Files

Capture 2020-11-11 11-20-09
Capture 2020-11-11 11-21-00
Capture 2020-11-11 11-22-09

Details

NTA Version: NTA 3.2 Dev Build 3.2.16
Script Used: SOP Standard Measurement 11-19-46AM 11Nov2020.txt
Time Captured: 11:19:46 11/11/2020
Operator: CHUCAOTEC
Pre-treatment:
Sample Name: NBanoburbujas M B 1.1
Diluent: Agua
Remarks:

Capture Settings

Camera Type: sCMOS
Laser Type: Green
Camera Level: 11
Slider Shutter: 890
Slider Gain: 146
FPS: 25.0
Number of Frames: 749
Temperature: 22.9 - 22.9 °C
Viscosity: (Water) 0.932 - 0.934 cP
Dilution factor: Dilution not recorded

Analysis Settings

Detect Threshold: 6
Blur Size: Auto
Max Jump Distance: Auto: 10.0 - 10.6 pix

Results

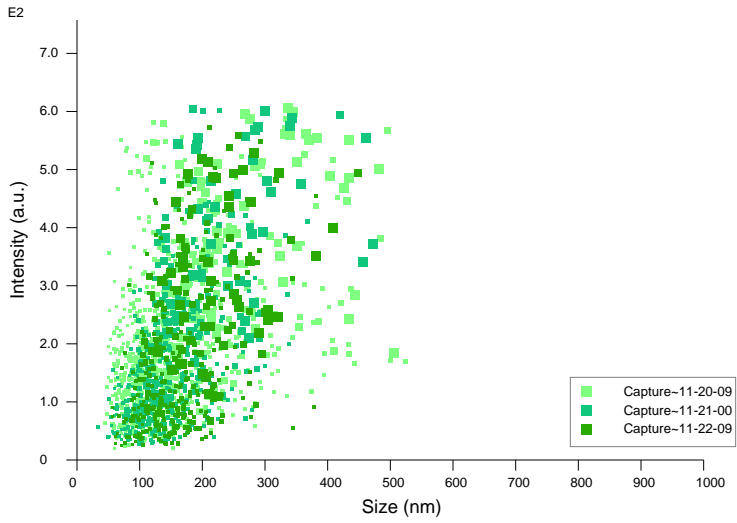
Stats: Merged Data

Mean: 216.2 nm
Mode: 149.4 nm
SD: 85.2 nm
D10: 132.3 nm
D50: 197.0 nm
D90: 345.8 nm

Stats: Mean +/- Standard Error

Mean: 212.2 +/- 7.0 nm
Mode: 156.6 +/- 6.4 nm
SD: 76.9 +/- 9.8 nm
D10: 133.5 +/- 4.4 nm
D50: 195.5 +/- 4.8 nm
D90: 319.6 +/- 27.3 nm
Concentration (Upgrade): 2.59e+008 +/- 8.78e+007 particles/ml
38.8 +/- 13.5 particles/frame
51.7 +/- 19.8 centres/frame

Concentration measurements may require some caution due to noise
See summary file for more info



Intensity / Size graph for Experiment:
Capture 2020-11-11 11-19-46